

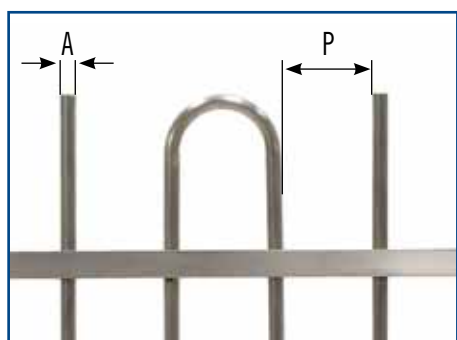
AISI304	L	H	A	P
EFENCE01	1959 (2000 mm) 78 3/4"	1000 mm 39 1/2"	∅ 20 mm 3/4"	110 mm 4 5/16"

B

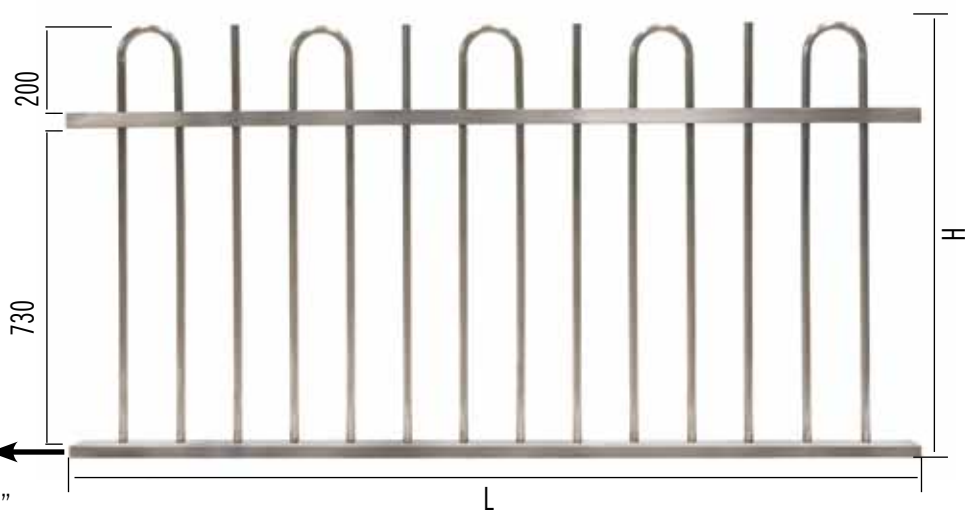


Info

SU RICHIESTA ANCHE IN AISI 316 E LUCIDATI A SPECCHIO
UPON REQUEST THEY CAN ALSO BE SUPPLIED IN STAINLESS STEEL AISI 316 AND/OR MIRROR POLISHED



35 x 35 mm
1 3/8" x 1 3/8"



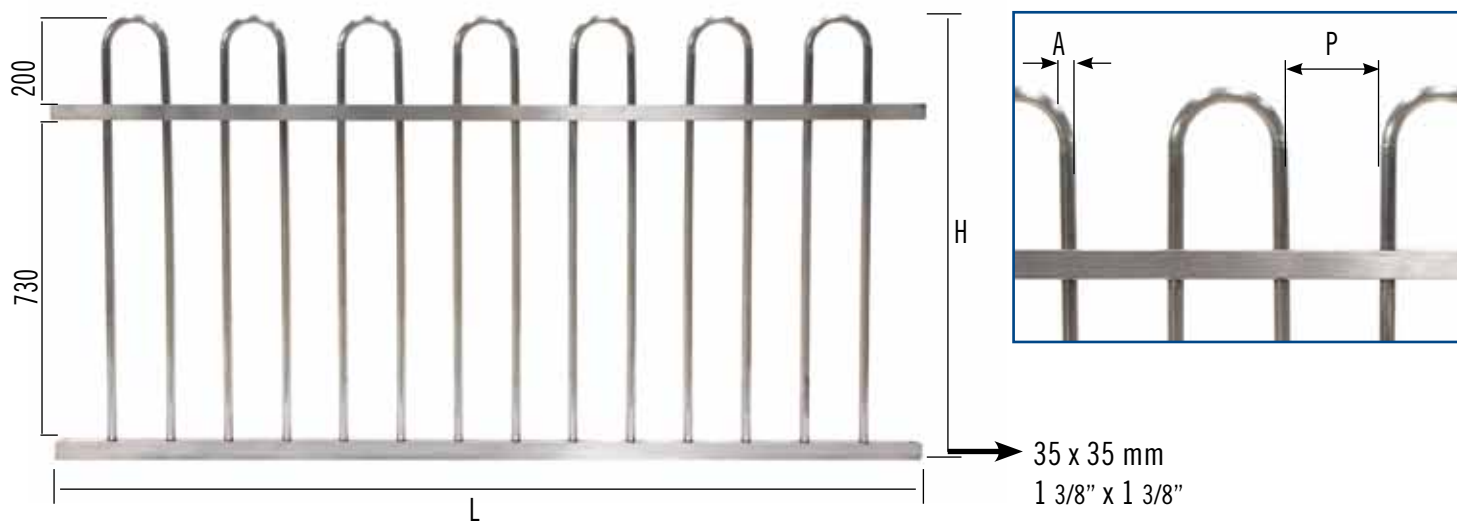
B

AISI304	L	H	A	P
EFENCE03	1959 (2000 mm) 78 3/4"	1000 mm 39 1/2"	∅ 20 mm 3/4"	110 mm 4 5/16"



Info

SU RICHIESTA ANCHE IN AISI 316 E LUCIDATI A SPECCHIO
UPON REQUEST THEY CAN ALSO BE SUPPLIED IN STAINLESS STEEL AISI 316 AND/OR MIRROR POLISHED



AISI304	L	H	A	P
EFENCE02	1959 (2000 mm) 78 3/4"	1000 mm 39 1/2"	\varnothing 20 mm 3/4"	110 mm 4 5/16"

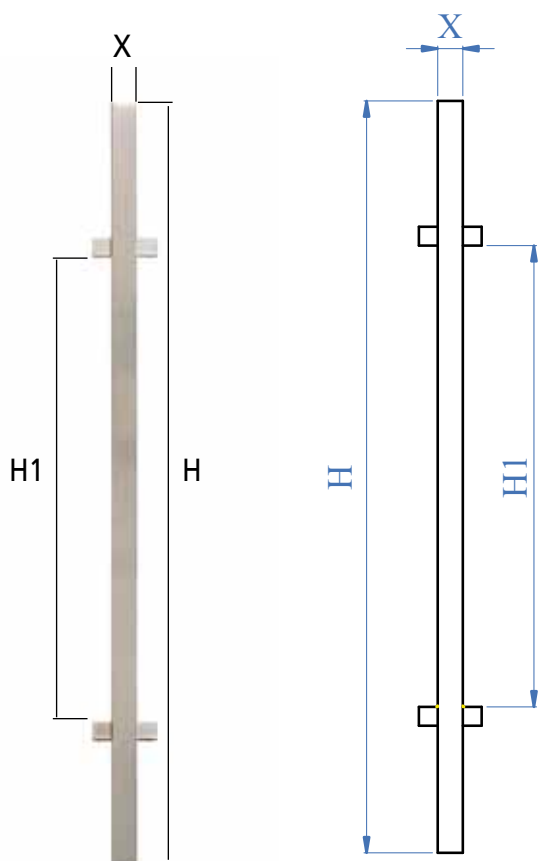
B



Info

SU RICHIESTA ANCHE IN AISI 316 E LUCIDATI A SPECCHIO
UPON REQUEST THEY CAN ALSO BE SUPPLIED IN STAINLESS STEEL AISI 316 AND/OR MIRROR POLISHED

MONTANTE
NEWEL POST



AISI304	L	H	H1	X
EPOST	1200 mm 47 1/4"	1200 mm 47 1/4"	730 mm 28 3/4"	40 x 40 mm 1 9/16" x 1 9/16"

TAPPI IN PLASTICA
PLASTIC CAPS



I pannelli EFENCE01 ed EFENCE02 sono forniti di tappi in plastica Ø 20 mm

Panels EFENCE01 and EFENCE02 are supplied with plastic end caps of 3/4" dia.



I pannelli sono forniti di viti e bulloni speciali con testa esagonale asportabile anti-rimozione

These panels come with screws and special bolts with hexagonal, removable heads to avoid robberies

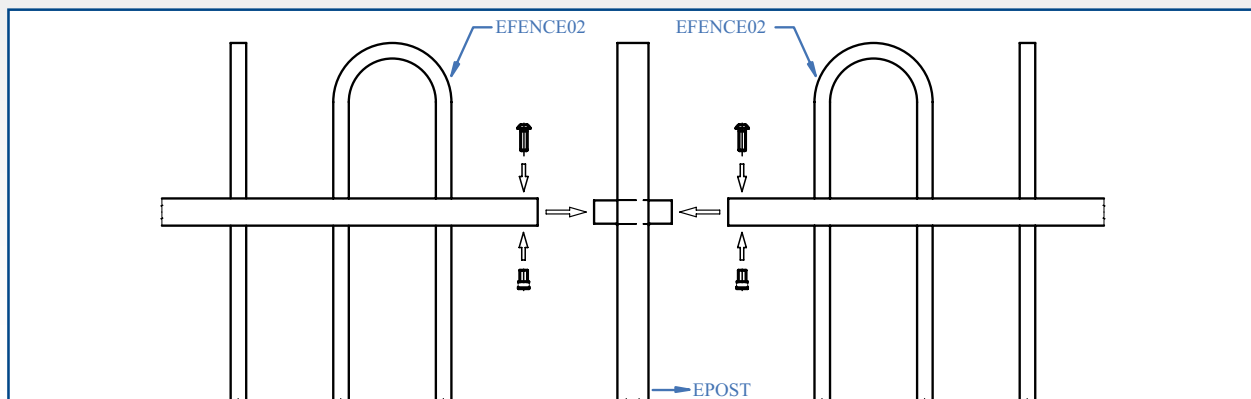


I piantoni sono forniti di tappi in plastica 40 x 40 mm

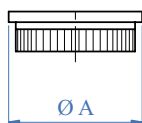
These newel posts come with plastic end caps with measurements 1 9/16" x 1 9/16"

Info

FACILE DA MONTARE - EASY TO ASSEMBLE

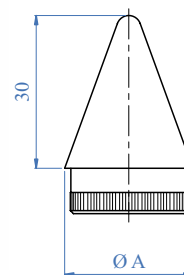


TAPPI TERMINALI PER PANNELLI IN ACCIAIO INOX
STAINLESS STEEL END CAPS FOR PANELS



Satinato con zigrinatura
Satin finish, with knurling

AISI304	Per tubo For tube A
E0119100	Ø 20,0 x 1,0 mm 3/4" dia. x 1/32"



Satinato con zigrinatura
Satin finish, with knurling

AISI304	Per tubo For tube A
E0119200	Ø 20,0 x 1,0 mm 3/4" dia. x 1/32"

Acciaio Stainless Steel



Gli acciai inossidabili sono leghe a base di Ferro, Cromo, Carbonio ed altri elementi quali principalmente il Nichel, il Molibdeno, il Manganese, il Silicio ecc., che li rendono particolarmente resistenti ad alcuni tipi di corrosione.

Questa caratteristica è dovuta alla proprietà di queste leghe di passivarsi in un ambiente sufficientemente ossidante (per esempio l'aria) tramite la formazione spontanea di un film superficiale di ossido di cromo.

The stainless steels are alloys made of iron, chrome, carbon and other elements among which we can mainly find nickel, molybdenum, manganese, silicon and so on. Such components allow the alloys to be particularly resistant to some types of corrosion. As a matter of fact, such alloys can passivate in a sufficiently oxidizing environment (like the air for example) through the spontaneous appearance of a surface oxide's chrome film.



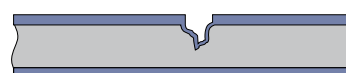
Quando questo film viene lacerato da graffi o lavorazioni il materiale sottostante risulta esposto agli agenti atmosferici.

When such film is torn by scratches or any kind of work, the underlying material is exposed to the weather.



La presenza di Cromo nella lega dell'acciaio rende possibile l'immediato riformarsi del film passivo.

The presence of the chrome in the stainless steel's alloy allows the immediate recreation of the protection film.



QUANDO L'ACCIAIO É DA CONSIDERARSI INOSSIDABILE
WHEN CAN THE STEEL BE CONSIDERED AS STAINLESS?

A.I.S.I.	Analisi indicativa % - Composition %								Altri elementi Others elements
	C max	Mn max	P max	S max	Si max	Cr	Ni	Mo	
303	0,15	2	0,20	0,15	1	17-19	8-10	0,6 max	Zr 0,6 max
304	0,08	2	0,045	0,030	1	18-20	8-12	-	-
316	0,08	2	0,045	0,030	1	16-18	10-14	2-3	-